

Atascosa County Ag Newsletter

Courtesy of: Texas A&M AgriLife Extension Office
25 E. 5th Street P.O. Box 379 Leming, TX 78050
830-569-0034 Atascosa.agrilife.org

Our Staff:

DALE RANKIN

County Extension Agent
Agricultural & Natural Resources

TERESA MENDIETTA

Assistant Extension Agent
Agricultural & Natural Resources

ASHLIE STAYTON

4-H Program Assistant

MONICA ZEPEDA

Office Manager

Inside this Issue:

Wildlife with Jacob Dykes...2

Beekeeping 101... 3

Calf Prices Strengthen, Cattle Herd
Shrinking...4-5

Upcoming Events ... 6-7

Texas Brigade Camp Dates ... 8

Beef 706 Flyer... 9

Wildlife Photography Contest Flyer... 10-
11

Multi County Water Screening...11-12

The members of Texas A&M AgriLife will provide equal opportunities in programs and activities, education, and employment to all persons regardless of race, color, sex, religion, national origin, age, disability, genetic information, veteran status, sexual orientation, or gender identity and will strive to achieve full and equal employment opportunities throughout Texas A&M AgriLife. The Texas A&M University System, U.S. Department of Agriculture, and the County Commissioners Courts of Texas Cooperating.

Wildlife With Jacob Dykes

As the Spring Turkey Season approaches I feel its is only necessary to share some of the amazing information that our Extension Wildlife Specialist has shared with us over the month of March.

To start off lets share the Spring Hunting Season Dates in Atascosa County we fall under the Rio Grande South Zone which makes the Bag Limit for Turkey 4 no more than one of which may be an Eastern Turkey.
Youth- Only from March 11-12, 2023 & May 6-7, 2023
Spring Season March 18 - April 30, 2023

1) How do you tell Turkey subspecies apart?

Jacob Dykes gives us a run through of unique subspecies characteristics that can help you tell turkeys apart.

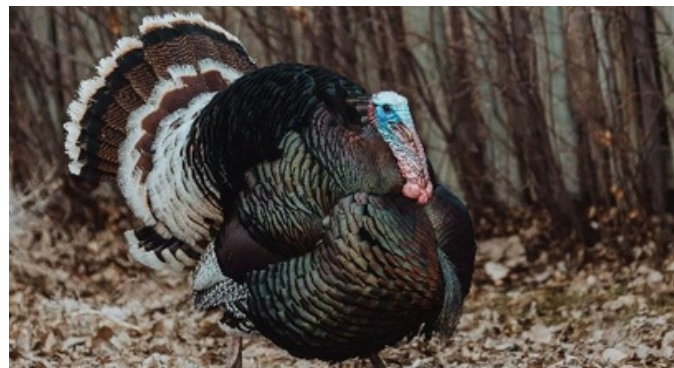
Rio Grande Turkey

- Tan-colored tips on tail feathers
- Adult males ~ 20 lbs.
- Adult females ~ 8 to 12 lbs.
- Gobble at everything (just my experience)



Eastern Wild Turkey

- Brown tips on tail feathers
- Adult Males ~18 to 30 lbs.
- Adult Females ~ 8 to 12 lbs.
- Very Long beards (longest beards of all species)



Merriam's Wild Turkey

- Whitish tips on tail feathers
- More white on wings
- Adult males ~ 18 to 30 lbs.
- Adult females ~ 8 to 12 lbs.

2) What do turkeys eat?

Turkeys are opportunistic omnivores. Typically, their diet consists of about 75% plant matter and 25% animal matter. They eat grass and forbs, and they take advantage of seasonal mast resources such as acorns and black berries. As for animal matter, they eat lots of insects such as beetles and grasshoppers but will "gobble" up a small snake or lizard when the opportunity arises.

BEEKEEPING 101

The Texas A&M AgriLife Extension Service will offer three Beekeeping 101 courses two in person in San Antonio on **March 24th and April 21st** and one **online April 3-4 and April 10-11**. They will culminate with field days.

The cost is \$65 in person and \$45 for the online course. Participants can register at **<https://tx.ag/Beekeeping1012023>**. Registering for the in-person session will also include access to the online course, which will be recorded.

The **March 24th and April 21st** events will be from **8:30 am - 4 pm at the AgriLife Extension office in Bexar County 3355 Cherry Ridge, Suite 208**. The online courses will be held each of the four days in April from 6-8 pm. Online attendees will receive a packet of beekeeping resources by mail; in-person participants will receive their packet on the day of training.

"This course includes an optional, but highly recommended, field day in an apiary," said Molly Keck, AgriLife Extension entomologist, Bexar County, and course instructor. "This hands-on field day to a beekeeper's yard will be where you really will learn the most about beekeeping."

Tentative field day dates for in-person participants are March 26-27 and April 22. April 7-8 are the expected field dates for online attendees. Participants will need to live or be willing to travel to the San Antonio area for the field day.

Suits and gloves will be provided for those participating in the apiary visit. The Field days are weather dependent and subject to change; participants must be 16 or older. More information will be provided after registration for additional information, **contact Keck at mekeck@ag.tamu.edu or call 210-631-0400**

Topics include basics to start a beekeeping journey. it will cover what to wear, what equipment to purchase, how to set up the apiary, common pests and diseases, and what a typical year looks like for a beekeeper, keck said. along with Honeybee Biology, Beekeeping Basics, Purchasing and Installing Bees, and Pest risks for Honeybees, Honey Extraction and More.

CALF PRICES STRENGTHEN, CATTLE HERD SHRINKING

Texas' cattle herd numbers continue to shrink, but calf prices remain strong, according to a Texas A&M AgriLife Extension Service expert.

Future cattle prices could hinge on weather and subsequent grazing availability and/or input costs, such as grain, said David Anderson, Ph.D., AgriLife Extension livestock marketing economist, Bryan-College Station.

Retail beef prices could be influenced by beef imports and the largest amount of beef in cold storage since 2016.

However, future cattle and beef prices hinge on long-term size of the U.S. herd, Anderson said.

Calf prices remain strong, and the market experienced recent increases, but Anderson expects herds to continue to shrink in 2023. He expects calf and beef prices to climb, but it could be 2024 before the market pushes them toward new records.

"We're getting there in terms of fewer animals and calves, but demand for cattle and beef hasn't been subject to a supply-demand imbalance that could really impact prices," he said.

Calf prices stay strong, consumer demand steady

So far, there has been no real change in beef demand, Anderson said. A record amount of beef – 28.3 billion pounds – was produced in 2022 on the heels of deeper than usual herd culling by Texas ranchers, according to the U.S. Department of Agriculture. The agency also reported 544 million pounds of beef in cold storage, which is the second highest since tracking began in 1973.



Demand for hamburgers and steaks remains steady despite inflation and interest rate hikes by the Federal Reserve, which have slowed the economy. But Anderson said he wonders at what point might consumer demand for beef decline as shoppers look for cheaper options and how any decline might impact cattle prices.

Calf prices in the Southern Plains market were \$2.31 per pound compared to \$2 the same time last year and the five-year average of \$1.69 per pound for 500–600-pound calves. They were even higher – \$2.42 per pound – at the 400–500-pound weight class compared to \$2.16 per pound last year and the five-year average of \$1.87 per pound.

Feedlots are buying steers amid strong cutout value, Anderson said. Cutout relates to the value average across seven major primal cuts,

CALF PRICES STRENGTHEN, CATTLE HERD SHRINKING CONT.

including chuck, loins, ribs and briskets, at wholesale.

Cutout values were relatively flat – \$2.76 per pound – compared to \$2.70 per pound in 2022, but 30% higher than the five-year average of \$2.12 per pound. Anderson said retail beef prices were down slightly compared to last year.

“People are still buying beef, and that’s a good thing,” he said. “We had a lot of beef out there this past year, and the runups in calf prices at that point were related to higher production costs in relation to calf prices.”

Market imbalance likely leads to higher calf and beef prices

The high cost of grains and other supplemental feed coupled with poor grazing and forage production led many producers to cull before costs surpassed the profit potential of strong prices.

Despite widespread rain over recent weeks, many parts of the state continue to experience extremely dry conditions, according to the U.S. Drought Monitor. Around 77% of Texas is dealing with some degree of drought, and 31% of the state is in severe to exceptional drought.

Producers in many areas continue to reduce cattle numbers or liquidate herds according to AgriLife Extension agent reports. But agents in other parts of the state are reporting vastly improved soil moisture conditions. There is an expectation that grazing on native grasses or improved cool-season grasses like winter wheat and ryegrass could boom with sunny days and warmer temperatures.

“It will take everyone deciding the drought is over before the Texas herd begins expanding again,” he said. “Some producers with good moisture and grazing may take on more calves to take advantage of the opportunity for good low-cost gains. That could drive calf prices up some more, but I still don’t think that causes an imbalance.”

The market “imbalance” scenario is likely to play out like the last statewide drought in 2011, Anderson said. Prolonged drought and an arid summer with poor grazing, hay production and limited water resources led Texas cattle ranchers to cut the state herd from almost 5 million to 3.9 million by 2014. Anderson said prices were strong after 2012 but by 2015, calf prices were setting all-time records as ranchers moved to rebuild their herds and take advantage of strong consumer demand and reduced supply, thus driving beef prices upward.

“I don’t expect price escalation to happen until we rebuild the herd,” he said. “That means producers are holding back more heifers to replace cows, and so there will be fewer head ending up in grocery stores. That process really constricted the beef and cattle markets and drove prices up.”

for more information visit

<https://agrilifetoday.tamu.edu/2023/02/28/calf-prices-strengthen-cattle-herd-shrinking/>

UPCOMING EVENTS & EDUCATIONAL OPPORTUNITIES

Atascosa Cattlemen's Association Annual Meeting

Our Atascosa Cattlemen's Association Will be hosting there annual meeting on Tuesday April 18,2023 at the Jourdanton Community Center 1101 Campbell Ave. Jourdanton, TX 78026 with registration begining at 6:00pm. If you would like to join our association the annual membership cost is \$20 per family.

2023 Let's Enjoy the Outdoors and Wildlife Photography

Our wildlife photography contest has opened up and will run from October 1, 2022, to April 15,2023. if you are interested in entering a photo the cost is \$20 per photo for adults and \$10 per photo for the youth. Categories include Wildlife Portraits, Landscape/Scenic, Motion, Game Camera, & Mobile Phone. The Contest is open to all photographers at least 8 years of age and reside in Atascosa County. Age 8-17 years must obtain verified parental or guardian contest regardless of division entered. 18 years or old are prohibited from entering the youth division. Entries must be submitted as digital files and emailed along with the entry form to atascosawildlifephoto@gmail.com

Brush Country Beef 706

Our Final Session; **Session three** will be held as a 1.5 day program on **May 2-3, 2023** at Texas A&M University Rosental Meat Science Center beginning at 9 am on Day 1 and 7:30am on Day 2 ending at 1pm.

To read more about each session and the Brush Country Beef 706 Program see attached Flyer.

20th Annual Atascosa Club Calf Sale

The Atascosa Club Calf Breeders are hosting there 20th annual Club Calf Sale **online Hosted by Cattle in Motion on April 24, 2023**. If you are intrested in looking at some of this years prospects you can **view the cattle April 21-24 at Bill Slomchinskis 5955 FM 1470 Pleasanton. TX**. You can also contact the sale breeders to go out and look at the owners homes.

Brett Slomchinski
830-570-1464

Dale Rankin
830-570-3944

Justin Taylor
210-317-0598

Leroy Kruger
830-570-0660

Ronnie Ussery
830-50-6471

Pat Galloway
210-288-9136

Multi County Water Screening Date Change

Texas A&MA AgriLife Extension Service of Atascosa, Dimmit, Frio, McMullen, LaSalle, and Zavala Counties are set to host a spring water screening on **April 19, 2023** to give residents the opportunity to have their well water tested **the costs is \$15 per sample**. Samples will need to be taken to your local extension office in Leming **between 8 & 9am on April 19th**.

The Results will be available on **April 20th at 6:00pm at the Frio County Extension office** where we will put on a program to discuss water quality. The Program held on **April 20th will offer 1 CEU** towards your private or commercial Licensee and will cover the topics of Bacteria Contaminants, Saline levels, Hydrocarbons, nitrates and recommendations for each positive element. If you have any question feel free to reach out to our office at **830-569-0034**



2023 Summer Camp Schedule

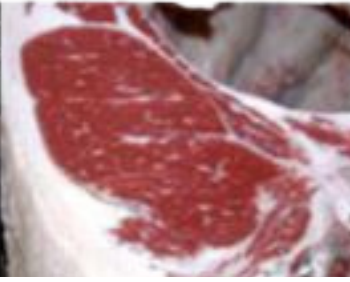
JUNE	7-11	ROLLING PLAINS BOBWHITE BRIGADE THE I687 FOUNDATION	RISING STAR, TX
	11-15	SOUTH TEXAS BUCKSKIN BRIGADE CHAP ARROSA RANCH	LA PRYOR, TX
	24-28	SOUTH TEXAS BOBWHITE BRIGADE BUCK HORN CREEK RANCH	MCCOY, TX
	24-28	SOUTH TEXAS RANCH BRIGADE DUVAL COUNTY RANCH	SANTA ANNA, TX
JULY	5-9	BASS BRIGADE WARREN RANCH	SANTA ANNA, TX
	12-16	WATERFOWL BRIGADE PINTAIL HUNTING CLUB	GARWOOD, TX
	17-21	RANCH BRIGADE WARREN RANCH	SANTA ANNA, TX
	23-27	NORTH TEXAS BUCKSKIN BRIGADE WARREN RANCH	SANTA ANNA, TX
	25-29	COSTAL BRIGADE SEA STAR BASE GALVESTON	GALVESTON, TX

APPLY NOV.1 - MAR.15 • TEXASBRIGADE.ORG/APPLICATIONS



BRUSH COUNTRY BEEF 706

Series of Three Field Trips/Workshops



The Texas Beef Council and Texas A&M AgriLife Extension have teamed up to present the Brush Country Beef 706 program. This three-part series of hands-on sessions, focusing on beef quality management and marketing opportunities, is available for all beef cattle producers. This checkoff-funded program is designed to help producers maximize profits and have a better understanding of the production process after their cattle enter the feed yard.

Session two will be held Saturday, February 4, 2023, at 9:00 am at Texaana Feeders Ltd. 3493 FM 539 Floresville, TX. During this session, producers will get to review their cattle as nearly finished market steers and learn about factors that impacted feed yard performance and impact finished steer value. The program will start with a feedyard tour at 9:00 am. Please RSVP by January 27, 2023 by calling 361-449-1703.

Session three will be held May 2-3, 2023 at 9:00 am at Texas A&M University Rosenthal Meat Science Center beginning at 9:00am on DAY 1 and 7:30am on Day 2 and ending at 1:00pm. This 1.5-day session will allow producers to participate in a hands-on exercise that takes their chosen feeder calves from session 1, now finished steers, through the harvest, grading and fabrication process. Please RSVP by April 21, 2023 by calling 361-449-1703. There will not be a cost to attend the workshop but individuals must participate in the complete series.

The members of Texas A&M AgriLife will provide equal opportunities in programs and activities, education, and employment to all persons regardless of race, color, sex, religion, national origin, age, disability, genetic information, veteran status, sexual orientation or gender identity and will strive to achieve full and equal employment opportunity throughout Texas A&M AgriLife. The Texas A&M University System, U.S. Department of Agriculture, and the County Commissioners Courts of Texas Cooperating.

WE REQUEST THAT YOU CONTACT THE ATASCOSA COUNTY EXTENSION SERVICE EIGHT DAYS (8) PRIOR TO THE EVENT OR AS SOON AS POSSIBLE TO ADVISE US OF THE AXILIARY AIR OR SERVICE THAT YOUR REQUIRE 830-569-0034

Questions

Dale Rankin Warren Kopplin
Atascosa County Live Oak County
830-569-0034 361-449-1703

Atascosa County
Live Oak County
McMullen County
Wilson County
Karnes County
Bee County
Bexar County
San Patricio

**To Register Call
Live Oak County
361-449-1703**

TEXAS A&M
AGRI LIFE
EXTENSION





Improving Lives.
Improving Texas.

Annual Meeting

Tuesday, April 18, 2023

Jourdanton Community Center
1101 Campbell Ave, Jourdanton, TX 78206

Tentative Agenda



6:00 p.m. Registration

6:30 p.m. Welcome and Introduction

Gary West - Chairman Atascosa Cattlemen's Assoc.

6:35 p.m. Silent Auction Announcement/ Supper & Invocation

Ryan Novak - Silent Auction Chair



6:40 p.m. Supplemental Feeding Cattle/Reproductive Health in Cows and Bulls/Best Management Practices for Internal and External Parasites.

Dr. Jason Cleere - Associate Professor
Texas AgriLife Extension Beef Cattle Specialist



8:00 p.m. Scholarship Winner Announcement

Gary West - Chairman Atascosa Cattlemen's Assoc.

9:00 p.m. Election of Directors

Gary West - Chairman Atascosa Cattlemen's Assoc.

Silent Auction

Ryan Novak - Silent Auction Chair

Texas A&M AgriLife
Extension Service- Atascosa Co.
PO Box 379
Leming, TX 78050

Phone: 830.569.0034
Fax: 830.569.8997
E-mail: dwrarkin@tamu.edu
Web: <http://atascosa.agrilife.org>

Please RSVP to (830) 569-0034 by Friday, April 14th. One (1.0) I.P.M. continuing education unit will be offered to Private, Commercial and Non-Commercial Applicators. The cost for annual membership is \$20 per family. Dues income is used to support activities and program implementation. The funds are also used toward scholarship in amounts up to \$500. We all know how expensive college can be. Investing \$20 now will afford your graduating senior the opportunity to apply for this scholarship. Dues can be mailed to A.C.A P.O. Box 379, Leming TX 78050

The members of Texas A&M AgriLife will provide equal opportunities in programs and activities, education, and employment to all persons regardless of race, color, sex, religion, national origin, age, disability, genetic information, veteran status, sexual orientation, or gender identity and will strive to achieve full equal employment opportunity throughout Texas A&M AgriLife. The Texas A&M University System, U.S. Department of Agriculture, and the County Commissioners Courts of Texas Cooperating. We will seek to provide reasonable accommodation for all persons with disabilities for this meeting. We request that you contact the Atascosa County Extension Service twelve days prior to the event at (830) 569-0034 or as soon as possible to advise us of the auxiliary aid or service that you require.

Let's Enjoy the Outdoors and Wildlife! Photography Contest

Hosted by Atascosa
Wildlife & Fisheries and
Atascosa Wildlife Coop



Get Started Right Away ...

Entry Period is open now through
April 14, 2023

Adult & Youth Categories are

- Wildlife Portraits
- Landscape/Scenic
- Motion
- Game Camera
- Mobile Phone

Photos must be captured in Texas.

For a complete set of rules and
official entry form visit
atascosa.agrilife.org and look at
upcoming events on the home page.

Who is Eligible?

This contest is open to all photographers who are at least 8 years of age and reside in Atascosa County. Entrants 8 to 17 years of age MUST obtain verified parental or guardian consent regardless of division entered. Entrants 18 years or older are prohibited from entering the youth division.

How to Enter?

Entries must be submitted as a digital files and emailed along with entry form to
atascosawildlifephoto@gmail.com

Entry Fees: Youth \$10/photo or Adults \$20/photo. Youth may compete in the adult division but cannot compete in both divisions.

Payment Methods: Payment and entry form may be submitted via check payable to Atascosa Wildlife & Fisheries, PO Box 379, Leming, Texas 78050. Cash is accepted in person at 25 E. 5th Street Leming, Texas 78050. Payment may be submitted online through Eventbrite at <https://www.eventbrite.com/e/418067329637>. Please note Eventbrite charges an additional fee for their services. Please remember to email us your entry form.

The Atascosa Wildlife & Fisheries and Atascosa Wildlife Coop are non-profit organizations created to connect adults and youth with nature, promote responsible stewards of wildlife, and encourage conservation efforts.



Atascosa Wildlife Photography Contest Entry Form



Contestant Information

Name _____ Phone Number : () _____

Email _____ Physical Address: _____

Age Division (check one) Youth ☐ Adult ☐

Payment Method (check one) CASH ☐ Check (# _____) Online ☐

Number of Photos Submitting: _____ Total: \$ _____

I AGREE TO THE RULES, TERMS AND CONDITIONS OF THE
PHOTO CONTEST: ☐ INITIALS: ☐

Photo Information

Photo ID or File Name: _____

Photo Description: _____

Category Entered: _____

Edits Made: _____

Photo Information

Photo ID or File Name: _____

Photo Description: _____

Category Entered: _____

Edits Made: _____



MULTI-COUNTY REPRODUCTION

MANAGEMENT WORKSHOP

ATASCOSA, WILSON, FRIO, MEDINA, MCMULLEN, LIVE OAK AND
BEXAR COUNTIES

Location:

Tom Brothers Ranch
770 Co Rd 412 Campbellton,
TX 78008

Date/Time:

May 9th
9:00 am – 2:00 pm

SPACE IS LIMITED SO SIGN UP EARLY!!

RSVP BY: May 4, 2023 (830) 569-0034

*Participation in workshop will require attendees to bring 3-5 docile cows that have been exposed to a bull over 90 days and possibly one cow that is open

TEXAS A&M
AGRI LIFE
EXTENSION

TOPICS

"INS AND OUTS"
OF PREGNANCY
TESTING

"HANDS ON"
ANATOMY OF A COW'S
REPRODUCTIVE TRACT
RECTAL PALPATION
(Demonstration and Exercise)

ESTRUS
SYNCHRONIZATION
MADE EASY

Reproductive Diseases

Overall Bull Fertility
(Demonstration and Exercise
supplies will be provided)

Taught by:

Dr. Bruce Carpenter
Livestock Specialist
Atascosa, Wilson, Bexar, Frio,
Live Oak, McMullen and
Medina
County Extension Agents
Ag/NR

For more information:

Texas A&M AgriLife
Extension
Atascosa County Office
Dale Rankin
830.569.0034