

Atascosa Ag Newsletter

Courtesy of: Texas A&M AgriLife Extension Office Atascosa County

25 E 5th Street P.O. Box 379 Leming, TX 78050

Questions? Call US! 830-569-0034

Check out our website at Atascosa.agrilife.org

Our Staff:

Dale Rankin

County Extension Agent
Ag and Natural Resources

Druann Benavides

County Extension Agent
Family and Community Health

Ashlie Stayton

4-H Program Assistant

Teresa Mendieta

Assistant Extension Agent
Ag and Natural Resources

Monica Zepeda

Office Manager

Why are my Tomato Leaves Curling cont. Page 2

Texas A&M Beef Cattle Short Course Page 2

Wildlife Habitat Tips/ Boaters Page 3

Wildlife Photography Contest Results Page 4,5,6

Upcoming Events page 7



The members of Texas A&M AgriLife will provide equal opportunities in programs and activities, education, and employment to all persons regardless of race, color, sex, religion, national origin, age, disability, genetic information, veteran status, sexual orientation, or gender identity and will strive to achieve full and equal employment opportunities throughout Texas A&M AgriLife. The Texas A&M University System, U.S. Department of Agriculture, and the County Commissioners Courts of Texas Cooperating.

Why are my Tomato Leaves Curling?

By: Laura Muntean & AgriLife Today

As the weather warms up and everything in the garden begins to grow some gardeners may notice their tomato plants have twisting or curling leaves. Although the yellowing of tomato leaves is one problem, the curling of tomato plant leaves is often quite another. According to Joe Masabni, Ph. D., Texas A&M AgriLife Extension Service vegetable specialist from the Department of Horticultural sciences, based in Dallas, the leaves of the tomato plant may be curling due to many reasons, but environmental, chemical or biological changes are typically to blame.



Broad Mites and Viruses in Tomatoes

Although broad mites are so small that you need a microscope to identify them, they can do significant damage. The mites attack a variety of vegetable plants and flowers and prefer to feed on young leaves and flowers. The toxins they inject into the leaves make them distort and curl.

Tomato plants also can be affected by hundreds of viruses, but the most common one associated with yellow and curling leaves is the tomato yellow leaf curl virus. This virus is spread by the sweet potato or silverleaf whitefly, which can be managed through insecticide oils and soaps.

Herbicide Drift with Tomato Plants

"Tomatoes are especially sensitive to herbicide sprays or herbicide drift," said Muthukumar Bagavathiannan, Ph.D. Crops and pastures are often treated with herbicides for controlling weeds and the movement of liquid particles from herbicide, called drift, can severely damage nearby tomato plants. "Physical herbicide drifts are often limited to few yards," Bagavathiannan said. "However, vapor drifts that can occur with certain herbicides and environmental conditions can travel for miles. While minor damage may not kill the plant, the damage may result in curled leaves and likely reduced fruit yields."

Wind speeds as low as 5 mph can result in considerable herbicide drift that can be damaging to tomatoes, especially when applied nearby. Though commercial applications of herbicides over large acreage are usually associated with herbicide drift, weed killers for lawns and landscapes often contain growth regulator herbicides such as 2,4-D and dicamba to which tomatoes are highly sensitive. These should be used with caution.

Why are my Tomatoes Leaves Curling? Cont.

Herbicide Residue Lingering in Soil

Masabni said the most common and biggest challenge he has seen in the last few years is unexpected herbicide residue in compost, which can remain in the soil for an extended period, unless treated or removed.

"In Texas, we have a lot of cattle and horses, and people are taking advantage of manure that they are getting, because it is free fertilizer," Masabni said. "What they don't know is that even if the manure has been drying out in the sun for five years the animal consumed straw from fields treated with the herbicide aminopyralid, that herbicide is still active in the manure. It does not break down. Even through composting, the herbicide residue will survive the heat of the composting."

This problem is not just temporary, once it is in the garden, it is in the garden for a long time, he explained. For gardeners utilizing raised beds, the solution is to get rid of the old soil and replace with new soil not tainted with the herbicide residue.

Checklist to Consider when Assessing Tomato Leaf Curl:

- Did you add composted manure or raw manure from a cow or horse? Chicken litter is not a problem. If yes, then herbicide residue may be the most likely cause. If no, next possibility is mites.
- Broad mites cannot be seen with the naked eye or a magnifying lens. You will need a microscope to confirm their presence or send a sample to the Texas A&M Plant Disease Diagnostic Lab.
- If the leaf curl is caused by mites, the best solution is to spray a miticide. Then new growth will be normal and plants will be fine. However, the damaged leaves will remain damaged and should be removed. Spray at least two times about one week apart.
- If the new growth continues to show curling or twisting then the cause is herbicide residue in the soil or compost. In this case, remove tainted soil or add activated charcoal. For more information see <https://agrilifelearn.tamu.edu/s/product/what-makes-tomato-leaves-twist-or-curl/01t4x000004Ofj3AAC>

Texas A&M Beef Cattle Short Course

The 68th Annual Texas A&M Beef Cattle Short Course has been scheduled for Aug 1-3 on the Texas A&M University Campus. Hosted by the Texas A&M AgriLife Extension Service and the College of Agriculture and Life Sciences' Department of Animal Science. At Texas A&M. From the Texas Aggie Prime Rib Dinner to the Cattleman's College and the nationally and internationally recognized three-day event annually attracts over 2,000 participants.

"High input prices and ranchers' response to them will be major theme of this year's conference," said Jason Cleere, Ph.D., conference coordinator and AgriLife Extension beef cattle Specialist in the Department of Animal Science. Both in-person and online attendance is being offered. Cost is \$240 for in-person attendance and \$160 for online if registered by July 27. A \$40 late registration fee will be charged after that date. To register, go to tx.ag/BCSC22Reg or call 979-845-6931 for more information.

Something for everyone

The program is expected to offer a full agenda for everyone, from novice livestock operator to the seasoned professional, Cleere said. "Ranchers are facing some really tough times now due to a lingering drought across most of the state, coupled with input cost that are nearly double what they were a year ago," he said. "Many of our sessions will be addressing these issues. One of our forage sessions will discuss grazing management in response to drought and high fertilizer prices along with how to move forward economically with high seed prices, hay prices, high fuel prices, etc."

The Cattleman's College will feature more than 20 concurrent sessions, with topics including animal health, nutrition, reproduction, breeding, genetics, selection, research, marketing and handling. The Management sessions will cover business, forage, range and purebred cattle, and speakers will also address landowner issues and fence building.

At least nine pesticide continuing education units and 14 veterinarian continuing education credits are available to attendees.

Wildlife Habitat Tips

As we began to move more into the summer we need to began to think about how we can manage for some of our favorite wildlife. We already know that they are currently struggling with the lack of water as well as the semi lack of food depending on where they are located. With that here are some helpful habitips from the Texas Parks and Wildlife:

- Begin fire ant control as day time temperature reach 85 degrees
- Monitor grazing program to provide nesting cover and plant diversity
- Leave some unharvested winter crops next to edges of field
- Before mowing, walk through hay meadows in order to reduce wildlife mortality and consider leaving unmowed strips. This will protect both fawns and ground nesting birds.
- Begin planning or prescribed burns that will take place in the winter.
- Monitor/fluctuate water levels in wetland areas.
- Clean your hummingbird feeders every three to four days. Make sure summer wildlife water sources are available

Boaters

Not only do we need to manage for our wildlife species, but Texas Parks & Wildlife Department are urging all to do there part and fight back against aquatic invasive species that threaten Texas Lakes.

As Memorial Day and Summer get closer we needed to ensure that when we are cleaning our boats to ensure we are not giving free rides to our invasive species and helping them travel to new lakes. Zebra Mussels and Giant Salvinia continue to spread to new areas in Texas they are some of the biggest threats to our Texas lakes. They can damage boats and infrastructure for water supply and control, alter lake ecosystems and cause harm to native species. They also leave shorelines with hazardous, sharp shells that impact lakefront recreation.

Watch there short instructional video to ensure you are following the correct steps when leaving a water source. <https://www.youtube.com/watch?v=DMIEwbXmLx8&feature=youtu.be>

Atascosa Wildlife Photography Contest Results

Overall Best of Show

Best of Show Adult

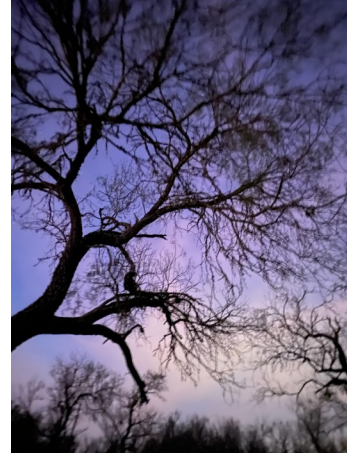
Montgomery Cain



Reserve Best of Show

Best of Show Youth

Ely Rankin



Category Winners:

Wildlife Portraits Adult

Stayton Hagen



Wildlife Portraits Youth

Kendal Crouch



Landscape/Scenic Youth

Presley Crouch



Motion Adults

David Smith



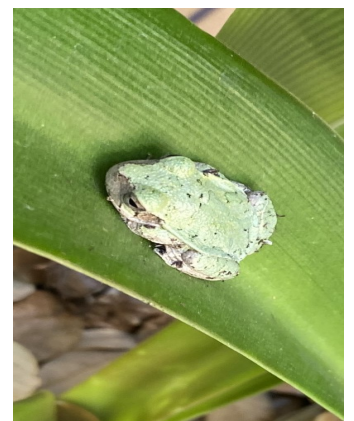
Game Camera Adults

David Smith



Mobile Phone Adult

David Smith



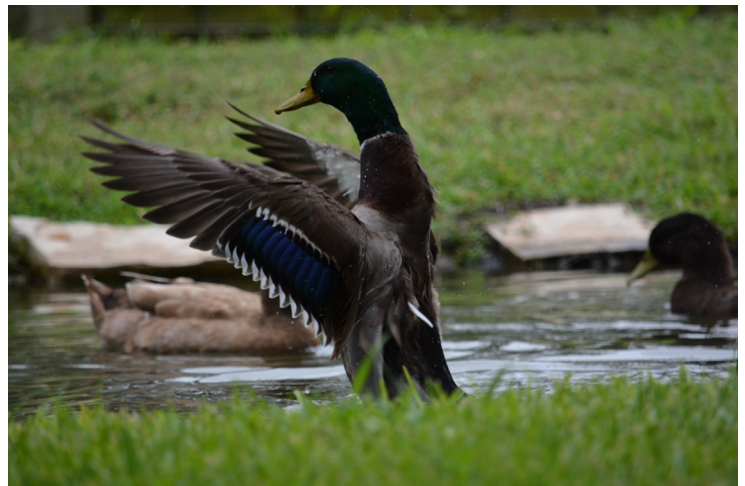
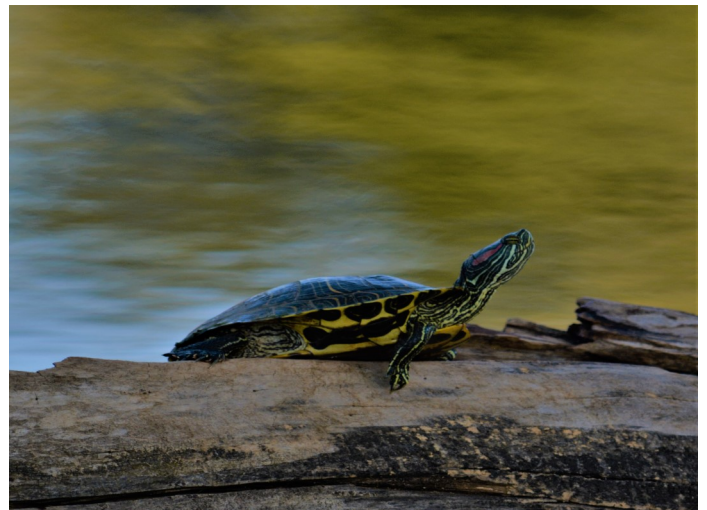
Atascosa Wildlife Photography Contest Results

We had a amazing turn out for the Wildlife Photography contest and enjoyed some really great images. Just as we showcased our winners we want to also showcase some of the other many images we received.



Atascosa Wildlife Photography Contest Results

We had a amazing turn out for the Wildlife Photography contest and enjoyed some really great images. Just as we showcased our winners we want to also showcase some of the other many images we received.



UPCOMING EVENTS & EDUCATIONAL OPPORTUNITIES

Insect and Turf Grass Management Workshop

The Texas A&M AgriLife Extension in Atascosa, Frio and Wilson Counties are hosting a Turf Grass Management work Shop **June 2, 2022 from 1pm –5pm** at the Atascosa County Extension Office in Leming , Tx. Some of the various topics being covered are Disease Management, Vector Control, Insect Management, Varieties Updates, Weed Management, and Alternative Fertilizers. Covered by Chrissie Seagers– Extension Turf Grass Specialist & Sonja Swiger Extension Entomology Specialist. This program will have a field portion take place the last hour in Pleasanton, TX. We will offer 3 CEU credits towards your Private Commercial or Non-Commercial Applicators License. **Please RSVP by May 27th** to the Atascosa County Extension Office 830-569-0034. **See attached Flyer.**

Brush Country Beef 706

The Texas Beef Council and the Texas A&M AgriLife Extension have teamed up to present the Brush Country Beef 706 Program. This is a three part series of hands on sessions, focusing on beef quality management and marketing opportunities, is available for all beef cattle producers, to help maximize profits and have a better understanding of the production process after their cattle enter the feed yard.

This Program is being put together by the Atascosa, Live Oak, Wilson, Karnes, Bee, McMullen, Bexar, and San Patricio County Extension Programs. The **First Session** will Take Place **September 15,2022 at 6:00pm** at the Live Oak Livestock Market Auction, 3795 U.S. 281 Three Rivers, TX beginning at 6 pm with dinner. **Session two** will take place **February 4, 2023 at 9:00 am** at Texana Feeders Ltd. 3493 FM 539 Floresville, TX. Lastly **Session three** will be held as a 1.5 day program on **May 2-3,2023** at Texas A&M Univeristy Rosenthal Meat Science Center beginning at 9 am on Day 1 and 7:30 am on Day 2 ending at 1pm.

To read more about each session and the Brush Country Beef 706 Program **See attached Flyer** if you would like to register call the **Live Oak County Extension Office at 361-449-1703**

Also be on the Look Out for a upcoming Fall Wildlife Workshop.

TEXAS A&M AGRILIFE EXTENSION COVID-19 UPDATE AND RESOURCES

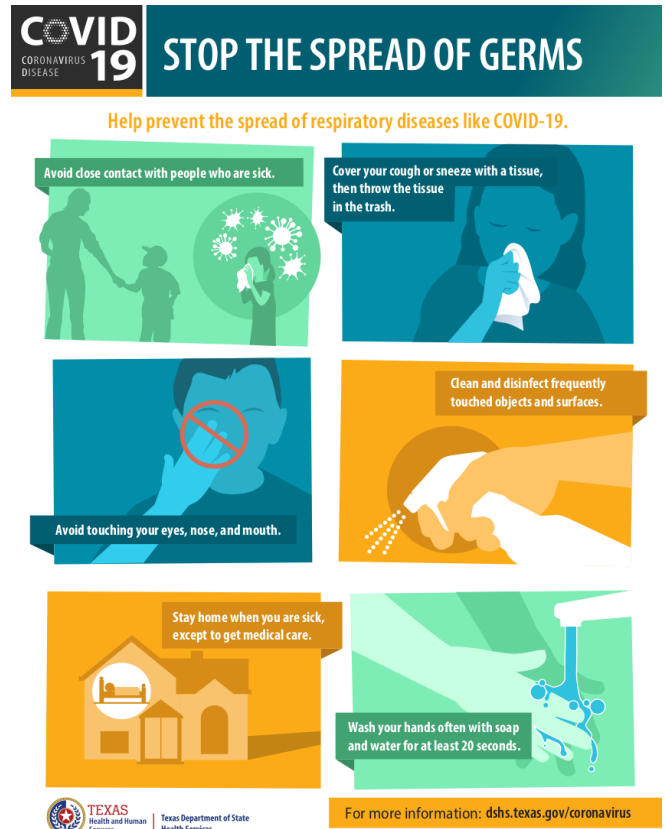
While more and more face to face events open up we are still upholding our commitment to helping Texans better their lives. Here at the Extension office we deal with three of some of the most important things in your life: Your Food, Your Health, and Your Children. For a complete list of available resources check out <https://agriflifeextension.tamu.edu/coronavirus/>

Food: Our local farmers and food producers are working hard to ensure a safe wholesome food product from their fields to your table. For our beef producers here in the county <https://beeffax.tamu.edu> is a great resource for cattle market updates.

Health: AS we adjust to our new normal our FCH Agent Dru Benavides has some awesome resources on our Facebook page to help stay active, manage stress, adhering to guidelines on social distancing, and how to safely shop at the grocery store. When out shopping for essential items it is important to remember the following tips:

1. If possible go by yourself, the less people out minimizes the chance of exposure and spread
2. Only touch products you will buy
3. Sanitize cart and cart handles before shopping
4. Keep your distance from others, CDC Guidelines say 6 feet apart at all times.
5. Go with a paper grocery list, be prepared so you minimize the amount of time at the store, and throw away your list when you're done shopping
6. After you get home thoroughly wash produce and disinfect items such as boxes and cans with sanitizing wipes, or make your own sanitizing solution with 1/3 of a cup of bleach to a gallon of water
7. Sanitize commonly touched items such as, door knobs, light switches, refrigerator door handle, faucets, car keys, and counter tops. Wash your hands with soap and water for 20 seconds after using cleaning products.

Children: As home becomes school and school becomes home, 4-H has some amazing educational resources to help facilitate school lessons with agriculture, learn about 4-H projects, and some at home projects to help the community. Join District 12 4-H with 12 at 12. A Facebook Live event every Tuesday and Thursday at noon. There will be quizzes, project exploration, and interaction with other 4-H'ers. Also Checkout the Texas 4-H Facebook Page for daily activities and videos! Contact Ashlie Stayton at the extension office for even more 4-H resources.





Insect and Turf Grass Management Workshop

ATASCOSA, FRIO, AND WILSON COUNTIES

3 CEUs to be Offered toward Private Commercial and Non- Commercial Applicators.

Location:

Atascosa County Extension

Office

25 East 5th Street
Leming, TX 78050

Date/Time:

June 2, 2022

1:00 pm -5:00 pm

SPACE IS LIMITED SO SIGNUP EARLY!!

**RSVP BY: May 27, 2022 by Calling the
Atascosa County Extension Office
at 830-569-0034**

Guest Speakers

**Chrissie Segars- Extension Turf Grass Specialist
Sonja Swiger - Extension Entomology Specialist**

**TEXAS A&M
AGRI LIFE
EXTENSION**

Topics

Disease Management

Vector Control

Insect Management

Varieties Updates

Weed Management

Alternate Fertilizer

**Field Tour
To be held
the last hour in
Pleasanton, Tx**

For more information contact:

**Texas A&M AgriLife Extension
Atascosa County Office**

Dale Rankin

**WE REQUEST THAT YOU CONTACT
THE ATASCOSA COUNTY EXTENSION
SERVICE EIGHT DAYS (8) PRIOR TO THE
EVENT OR AS SOON AS POSSIBLE TO ADVISE
US OF THE AUXILIARY AID OR
SERVICE THAT YOU REQUIRE**

830-569-0034

The members of Texas A&M AgriLife will provide equal opportunities in programs and activities, education, and employment to all persons regardless of race, color, sex, religion, national origin, age, disability, genetic information, veteran status, sexual orientation or gender identity and will strive to achieve full and equal employment opportunity throughout Texas A&M AgriLife.



Brush Country Beef 706

Series of Three Field Trips/Workshops



The Texas Beef Council and Texas A&M AgriLife Extension have teamed up to present the Brush Country Beef 706 program. This three-part series of hands-on sessions, focusing on beef quality management and marketing opportunities, is available for all beef cattle producers. This checkoff-funded program is designed to help producers maximize profits and have a better understanding of the production process after their cattle enter the feedyard.

Session one will be held Thursday, September 15, 2022 at 6:00 pm at the Live Oak Livestock Market Auction, 3795 U.S. 281, Three Rivers, TX (4 miles south of Three Rivers, TX on Hwy 281 or 6 miles north of George West on Hwy 281, located on the west side of Hwy 281) beginning at 6:00pm with dinner. Speakers will discuss factors affecting feeder calves and the value they receive at auction based on their expected performance in the feedyard. Producers will then choose and bid on a calf for the feedyard and processing sectors.

Session two will be held Saturday, February 4, 2023 at 9:00 am at Texana Feeders Ltd. 3493 FM 539 Floresville, TX. During this session, producers will get to review their cattle as nearly-finished market steers and learn about factors that impacted feedyard performance and impact finished steer value. The program will start with a feedyard tour at 9:00 am.

Session three will be held May 2-3, 2023 9:00 am at Texas A&M University Rosenthal Meat Science Center beginning at 9:00am on Day 1 and 7:30am on Day 2 and ending at 1:00pm. This 1.5-day session will allow producers to participate in a hands-on exercise that takes their chosen feeder calves from session 1, now finished steers, through the harvest, grading and fabrication process.

There will not be a cost to attend the workshop but individuals must participate in the complete series.

Questions

Dale Rankin
Atascosa County
830-569-0034

Warren Kopplin
Live Oak County
361-449-1703

Atascosa County
Live Oak County
Wilson County
Karnes County
Bee County
McMullen County
Bexar County
San Patricio

TEXAS A&M
AGRI LIFE
EXTENSION

To Register call
Live Oak County
361-449-1703

