

Atascosa Ag Newsletter

Courtesy of: Texas A&M AgriLife Extension Office Atascosa County

25 E 5th Street P.O. Box 379 Leming, TX 78050

Questions? Call US! 830-569-0034

Check out our website at Atascosa.agrilife.org

Our Staff:

Dale Rankin

County Extension Agent
Ag and Natural Resources

Druann Benavides

County Extension Agent
Family and Community Health

Ashlie Stayton

4-H Program Assistant

Teresa Mendieta

Assistant Extension Agent
Ag and Natural Resources

Monica Zepeda

Office Manager

**Cow Calf Corner: Holding on to Calves
through a Down Market Page 2,3**

Spotted Seatrout Regulations Page 3

Upcoming Events Page 4

Wildlife Co-op Annual Meeting Flyer Page 5

Let's Enjoy the Outdoors & Wildlife Page 6



The members of Texas A&M AgriLife will provide equal opportunities in programs and activities, education, and employment to all persons regardless of race, color, sex, religion, national origin, age, disability, genetic information, veteran status, sexual orientation, or gender identity and will strive to achieve full and equal employment opportunities throughout Texas A&M AgriLife. The Texas A&M University System, U.S. Department of Agriculture, and the County Commissioners Courts of Texas Cooperating.

TIME TO PREPARE FOR SPRING VEGETABLE PLANTING

As we move further in to the Spring it is time to prepare our gardens for those spring vegetable plants.

Some helpful tips to get a successful spring garden. First clean out all of that debris from the winter months as well as remove weeds. Ensure that we have nutrient rich soil, and possibly add some fresh soil if

needed and then you are ready to have some amazing Spring Gardens. Your seeds can be purchased from retailers and delivered to your home, as well as any supplies needed. For more vegetables to be grown or for more information visit. <https://bexar-tx.tamu.edu/earth-kind-horticulture/best-plants-for-bexar-county-south-texas/recommended-vegetable-varieties-for-spring-planting/> or contact your local extension office.



Vegetable	Varieties	Planting Date
Beans, Pinto	Pinto, Improved Pinto	March 15—May 1
Beets	Pacemaker, Early Wonder	February 1—April 20
Cantaloupe	Perlita, Caravelle,	March 15—May 1
Sweet Corn	Guadalupe Gold	February 25—April 15
Cucumbers (pickling)	Calypso, Carolina	March 5—April 15
Cucumbers (Slicing)	Dasher II, Gemini 7	March 5—April 15
Eggplants (transplants)	Florida Market, Black Beauty	March 15—May 10
Leek	American Flag Electra	February 1—May 1
Okra	Emerald, Clemson Spineless	April 1—July 15
Sweet Peppers (transplant)	Capistrano, Big Bertha	March 15—May 1
Hot Peppers (transplant)	Long Red, Thin Cayenne	March 15—May 10
Squash	Multipik, Dixie Hybrid, Crookneck	March 10—May 10
Watermelon	Charleston Grey, Crimson Sweet	March 1—May 1
Tomatoes (transplants)	Sunmaster, BHN 968 Cherry	March 15—May 10
Onions	Granex(Yellow & White) Crystal Wax White Bunching	February 1—March 1

COW-CALF CORNER: HOLDING ON TO CALVES THROUGH A DOWN MARKET

From: Texas & Southwestern Cattle Raisers Association

By: Paul Beck, Oklahoma State University Extension Beef Cattle Nutrition Specialist.

First it was just drought, now we have a war in eastern Europe. On the 24th of February Feeder Cattle futures markets were down over \$4 for most months, Live Cattle were down over \$2. Corn and wheat were up over \$0.50/bushel. The futures market jitters have given a lot of us more to worry about. Producers have asked about keeping calves through these low markets until prices improve, weather this is possible or advisable depends on the ability to lock in prices to control the risk of further price erosion. There are several ways that cattle can be retained to delay marketing, and the recommendation of which production system to use depends on several factors related to the size and type of cattle, available resources and producer risk tolerance. By the end of February, growing cattle should have some graze out wheat available since we have gotten moisture from our winter storms and temperatures are warming up. With wheat futures over \$9/bushel, will the wheat intended for graze out earlier in the year still be grazed? To harvest a grain crop the calves will need to be coming off pasture within a few weeks. If markets haven't recovered and producers want to keep them longer, we have a few options for retaining ownership and adding further value. Larger cattle kept on graze out wheat, weighing over 650 pounds, should not be held over on warm season grass. On graze out wheat pasture, these calves often gain over 2.5 pounds per day. Over the years, cattle on graze out wheat pasture studies conducted in Oklahoma and Arkansas report gains from 2.2 to 3.3 pounds per day from late February to early May (65 to 80 days). These cattle can gain 800 to 900 pounds. Calves from research recently discussed in this column from Arkansas were placed on feed at 880 pounds following an extended wheat grazing program. These cattle gained 3.4lbs/day during finishing and weighed 1283 pounds at slaughter. In another Arkansas trial, yearlings fed after wheat pasture gained 4.9 lbs/day and were slaughtered at 1323 pounds. These two sets of cattle provide a range of performance expectations from about average to much better than average.

A summary of yard closeouts from Hitch Enterprises shows that steers weighing 900 pounds when entering the feedlot were slaughtered at 1466 pounds, were on feed for an average of 142 days, gained 3.78 lbs/day, with 6.38 pounds of feed required per pound of gain. Lighter steers weighing 700 pounds were on feed for 183 days, gaining 3.48 pounds per day, required 6.13 pounds of feed per pound of gain, and slaughtered at 1402 pounds. The Focus on Feedlots Kansas Feedlot Performance and Feed Cost Summary (Justin Waggoner, Kansas State University, <https://www.ksu.edu/about/newsletters/focus-on-feedlots/monthly-reports.html>) of feedlot closeouts from December shows steers gained 3.83 lbs/day and cost gains were \$108.37/cwt with expected cost of gain to be \$115/cwt for cattle placed on feed that month.

COW-CALF CORNER: HOLDING ON TO CALVES THROUGH A DOWN MARKET CONT:

Corn getting more expensive and high fertilizer prices may reduce the corn acres planted this spring. Research indicates that cost of corn explains 58 to 67% of variability of cost of gain, but price of fed cattle and feeder cattle explains 70 to 80% of feeding profit risk. This will have a big impact on the price of feeder cattle futures are right at \$138 and \$142 for when feeders going on feed today will be marketed in August through October. Cattle placed on feed in June will be coming off feed at a higher market of \$147. There is considerable risk in this but there is potential for positive movement in the market, even so don't bet the farm without some form of risk protection in place.

Figuring out a way to keep calves until markets improve can be tricky and high feed prices. Dave Lalman and Paul Beck discuss some alternatives for doing this in a recent Ranchers Thursday Lunchtime webinar .

<https://www.youtube.com/watch?v=e7v-zTmzzHw&t=2207s>

SPOTTED SEATROUT REGULATIONS

Are you headed to the coast for Spring Break!! The Texas Parks and Wildlife Commission has approved a rule change to the bag and size limits for spotted seatrout on the middle and lower Texas coast. This new rule takes effect on March 16, 2022 in Matagorda Bay, San Antonio, Bay Aransas Bay, Corpus Christi Bay, and the Upper and Lower Laguna Madre Bay systems.

From March 16 to August 31, 2023 the spotted seatrout bag and size limits south of FM 457 will be:

- Three fish per day per angler
- A minimum size of 17 inches and a maximum size limit of 23 inches
- No fish over the maximum length may be retained.



Digital Outdoor Annual

Biologists expect this regulation change to result in an increase in the population numbers since more mature fish will be left in the water to spawn from April to September in 2022 and 2023. For the most up-to-date information about bag and size limits check the digital outdoor annual (<https://tpwd.texas.gov/regulations/outdoor-annual/>) on the Texas Parks and Wildlife Department's website or download the Outdoor Annual App

UPCOMING EVENTS AND EDUCATIONAL OPPORTUNITIES

SPRING YOUTH GARDEN EDUCATOR TRAINING

"If you are interested in starting a gardening program in your school or community or are looking for ways to enhance your already-existing youth garden you do not want to miss this opportunity" David Rodriguez. The Texas A&M AgriLife Extension Service will be putting on a Garden Educator Training. This program is designed for teachers, educators, and volunteers in support of youth gardening. The training will run from 7:50 a.m. to 1 p.m. at the San Antonio Botanical Garden Discovery Classrooms/Culinary Garden at 555 Funston Place on March 12, 2022. The cost is \$20 and includes a light breakfast, training and course materials. You must preregister at <https://tx.ag/SYGETReg22>. Due to capacity restrictions, only one participant per school may attend the training and receive the materials.

Atascosa County Wildlife Co-op Annual Meeting

The Atascosa County wildlife Co-op will be hosting there annual meeting on March 29,2022 at the Atascosa County Extension office. The topic of the meeting will be Wildlife Photography presented by Joseph Richards a Professional Wildlife Photographer.

The cost of the Annual Membership is \$25 dollars and you must RSVP by March 25th. If you have any questions feel free to contact our Atascosa County Extension office at 830-569-0034. Dinner will be provided. **See Annual Meeting Flyer on Page**

Lets Enjoy the Outdoors and Wildlife Photography Contest

The Atascosa Wildlife and Fisheries & Atascosa Wildlife Co-op are hosting a photography contest open to anyone at least 8 years old and who resides in Atascosa County. The contest is open now through April 15th if you have nay questions feel free to contact our office. **See the attached flyer on Page**

Save the Date

The following dates are for upcoming educational programs we will be releasing more information soon so mark your calendars.

April 6-7, 2022 Multi County Water Screening

April 11, 2022 Beef Cattle Online Sale

April 19, 2022 Atascosa Cattleman Association Annual Meeting

May 9, 2022 Reproduction Management Training



Wildlife Co-op Annual Meeting

Atascosa County

MARCH 29, 2022

ATASCOSA COUNTY EXTENSION OFFICE
25 E 5TH STREET, LEMING, TX 78050

REGISTRATION— 6:00PM
PROGRAM— 6:30PM

**RSVP BY FRIDAY,
MARCH 25TH**

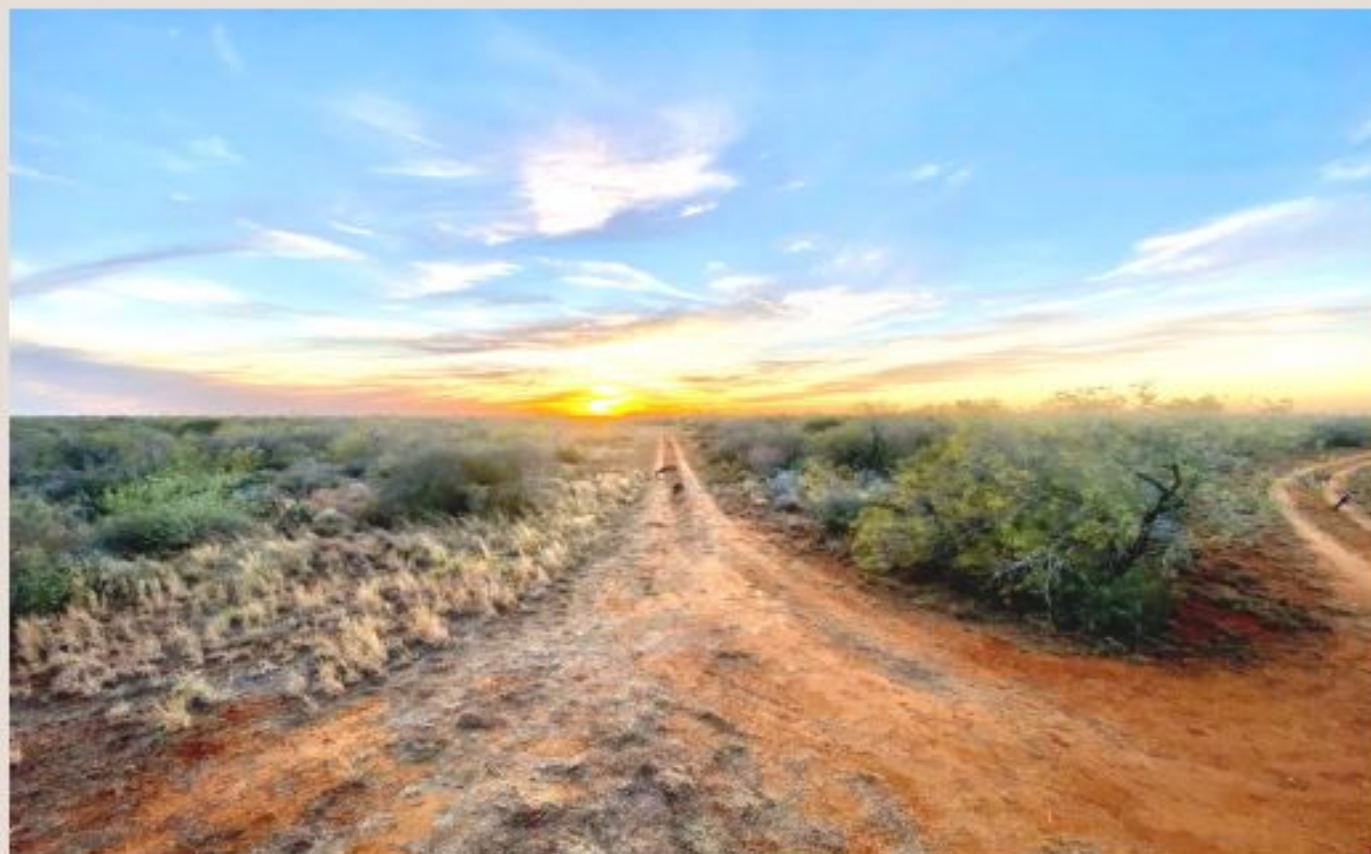
For more info, please call
the Atascosa County
Extension Office at
830-569-0034.

Topic:

Wildlife Photography
Joseph Richards– Presenter &
Professional Wildlife Photographer

Annual Membership:
\$25.00

Dinner sponsored by the Atascosa Wildlife Coop



Let's Enjoy the Outdoors and Wildlife! Photography Contest

Hosted by Atascosa
Wildlife & Fisheries and
Atascosa Wildlife Coop



Get Started Right Away...

Entry period is open now through
April 15, 2022.

Adult & Youth Categories are

- Wildlife Portraits
- Landscapes/Scenic
- Motion
- Game Camera
- Mobile Phone

Photos must be captured in Texas. For a complete set of rules and official [entry form](#) visit atascosa.agrilife.org and look at upcoming events on the home page.

Who is Eligible?

This contest is open to all photographers who are at least 8 years of age and reside in Atascosa County. Entrants 8 to 17 years of age MUST obtain verified parental or guardian consent regardless of division entered. Entrants 18 years or older are prohibited from entering the youth division.

How to Enter?

Entries must be submitted as digital files and emailed along with [entry form](#) to atascosawildlifephoto@gmail.com.

Entry Fees: Youth \$10/photo or Adults \$20 per photo. Youth may compete in the adult division but cannot compete in both divisions.

Payment Methods: Payment and [entry form](#) may be submitted via check payable to Atascosa Wildlife & Fisheries, PO Box 379, Leming, Texas 78050. Cash is accepted in person at 25 E. 5th Street in Leming, Texas 78050. Payment may be submitted online through Eventbrite at <https://www.eventbrite.com/e/lets-enjoy-the-outdoors-and-wildlife-photography-contest-tickets-131638455163>. Please note Eventbrite charges an additional fee for their services. Please remember to email us your [entry form](#).

The Atascosa Wildlife & Fisheries and Atascosa Wildlife Coop are non-profit organizations created to connect adults and youth with nature, promote responsible stewards of wildlife, and encourage conservation efforts.

While more and more face to face events open up we are still upholding our commitment to helping Texans better their lives. Here at the Extension office we deal with three of some of the most important things in your life: Your Food, Your Health, and Your Children. For a complete list of available resources check out <https://agrilifeextension.tamu.edu/coronavirus/>

Food: Our local farmers and food producers are working hard to ensure a safe wholesome food product from their fields to your table. For our beef producers here in the county <https://beeffax.tamu.edu> is a great resource for cattle market updates.

Health: As we adjust to our new normal our FCH Agent Dru Benavides has some awesome resources on our Facebook page to help stay active, manage stress, adhering to guidelines on social distancing, and how to safely shop at the grocery store. When out shopping for essential items it is important to remember the following tips:

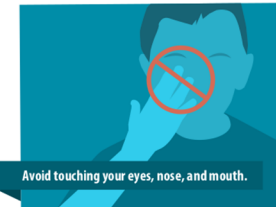
1. If possible go by yourself, the less people out minimizes the chance of exposure and spread
2. Only touch products you will buy
3. Sanitize cart and cart handles before shopping
4. Keep your distance from others, CDC Guidelines say 6 feet apart at all times.
5. Go with a paper grocery list, be prepared so you minimize the amount of time at the store, and throw away your list when you're done shopping
6. After you get home thoroughly wash produce and disinfect items such as boxes and cans with sanitizing wipes, or make your own sanitizing solution with 1/3 of a cup of bleach to a gallon of water
7. Sanitize commonly touched items such as, door knobs, light switches, refrigerator door handle, faucets, car keys, and counter tops. Wash your hands with soap and water for 20 seconds after using cleaning products.

Children: As home becomes school and school becomes home, 4-H has some amazing educational resources to help facilitate school lessons with agriculture, learn about 4-H projects, and some at home projects to help the community. Join District 12 4-H with 12 at 12. A Facebook Live event every Tuesday and Thursday at noon. There will be quizzes, project exploration, and interaction with other 4-H'ers. Also Checkout the Texas 4-H Facebook Page for daily activities and videos! Contact Ashlie Stayton at the extension office for even more 4-H resources.



STOP THE SPREAD OF GERMS

Help prevent the spread of respiratory diseases like COVID-19.



Texas Department of State Health Services

For more information: dshs.texas.gov/coronavirus

to